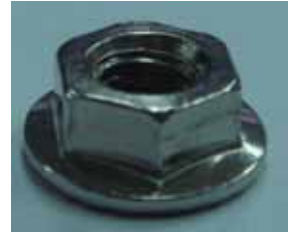


# ASSEMBLY ILLUSTRATION

**Step 1:** Assemble Frame with Bottom Plate. (HEX SOCKET CAP SCREWS : M8\*12 & Hex Flange Nut)



Hex Flange Nut

**Step 2 :** Assemble Frame with Top Plate. (HEX SOCKET CAP SCREWS : M8\*12 & Hex Flange Nut)



**Step 3 :** Assemble Castor (Screw : M6\*12 & Flange Nut) and Leveling feet



**Step 4 :** Assemble Top Fan panel and Cable Entry cover. (Self Tapping Screw : M3.5\*6)



**Step 5 :** Assemble Horizontal Rail (Screw : M6\*12 & Catch Nut)



**Catch Nut**

**Step 6:** Assemble 4 mounting angle (M6\*12)



**Step 7 :** Assemble Door Set



**Step 8 :** Assemble Side Panel

